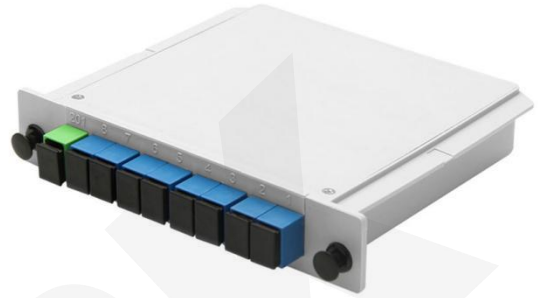




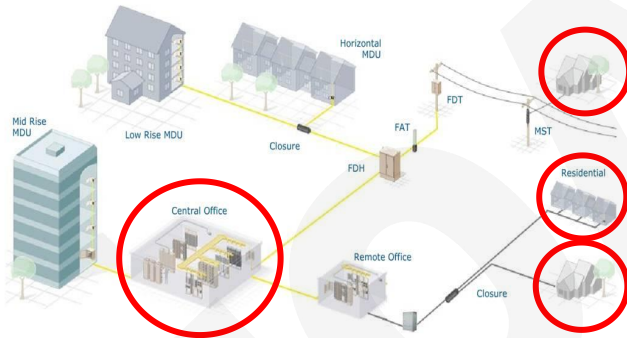
# CASSETTE TYPE PLC SPLITTER SERIES

## Description

Planar lightwave circuit PLC splitter is a type of optical power management device that is fabricated using silica optical waveguide technology. It features small size, high reliability, wide operating wavelength range and good channel-to-channel uniformity, and is widely used in PON networks to realize optical signal power splitting. We provides whole series of 1xN and 2xN splitter products that are tailored for specific applications.



## Application



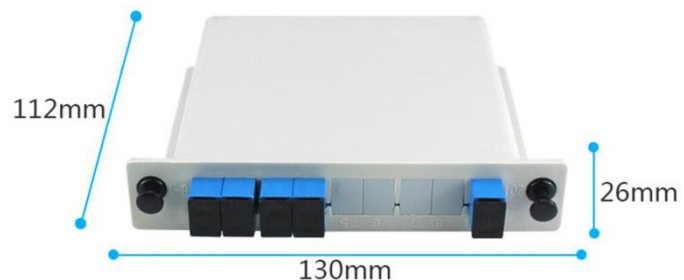
## Advantages

- FTTH, FTTC, FTTB
- Passive Optical Networks(PON)
- CATV networks and data communications
- Fiber optic equipment and systems

## Features

Planar Lightwave Circuits(PLC) Optical Splitter are fully passive optical branching devices that exhibit very low insertion loss and PDL, great channel uniformity and a wide wavelength operative range. These splitters are manufactured and tested to Telcordia-1209-core & GR-1221-core to provide high performance, specifically designed to meet the tough requirement of FTTH,PON and CATV networks.

- High uniformity
- Low insertion loss
- Compact & small size
- High reliability and stability
- Optional input & output
- Single Mode Fiber Type G657A





## Specification

Cassette Type PLC Specification						
Wavelength(nm)	1260-1650					
Parameters	1×4	1×8	1×16	2×4	2×8	2×16
Insertion Loss (with connector) (dB)	≤7.4	≤10.5	≤13.8	≤7.5	≤10.8	≤14.1
Uniformity (dB)	≤0.8	≤0.8	≤1.0	≤1.2	≤1.8	≤2.4
PDL(dB)	≤0.19	≤0.18	≤0.2	≤0.18	≤0.14	≤0.2
Size(H×W×L)(mm)	25x130x100	50x130x100		25x130x100		50x130x100
Return Loss(dB)	UPC≥50 APC≥55					
Directivity(dB)	≥55					
Temperature Range(°C)	-40 ~ +85					
Storage Temperature(°C)	-40 ~ +85					

## Ordering Information

CS108-I2-O2			
CS	108	I/O	2
BR - Bare Splitter	102-1x2	I - Input O - Output	0 - Without connector
BL - Blockless Splitter	104-1x4		1 - SC/UPC
CS - Cassette Splitter	108-1x8		2 - SC/APC
MD - Module Splitter	116-1x16		3 - LC/UPC
IS - Insert Type Splitter	132-1x32		4 - LC/APC
RM - Rack Mount Splitter	164-1x64		5 - FC/UPC
			6 - FC/APC
		7 - ST/PC	