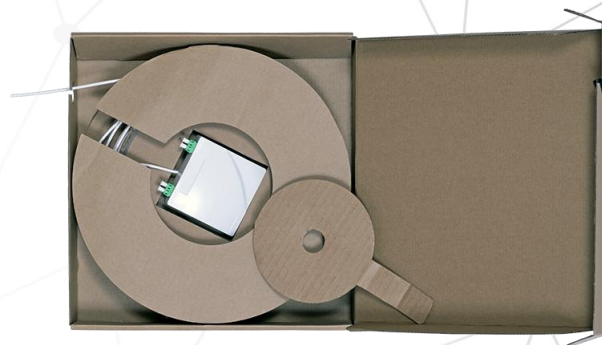


The Pizza Box is a pre-terminated fiber access terminal box mounted on a rotating coil that rotates when the cable is pulled out. It can be used especially where the socket is installed towards the main box. It serves mainly in development projects during the construction of the buildings, when fiber optic networks are built at the same time like other utility networks. It is the most suitable solution for insertion into spiral cable wraps and shafts for vertical pipes. On each floor, additional cables are added to the bundle, coils are unwound in the flats one by one and finally the cables from all flats are connected to the feeder cable in the main box.

- Capacity of up to 2× SC / 4× LC connector
- Cardboard packaging with rotating coil
- Quick cable unwinding during installation
- Maximum cable length 100 m
- Pre-terminated solution for easy installation
- Optional adapter with automatic cap



TECHNICAL SPECIFICATIONS	PARAMETER
Ingress Protection	IP30
Impact Protection	IK07
Material	ABS
Color	White RAL 9003
Dimensions Pizza Box (H × W× D)	315 × 300 × 60 mm
Dimensions ORM 1 (H × W ×D)	81 × 81 × 25 mm
Weight	1 kg
Adapter	
Operating Wavelength	1,260 to 1,650 nm
Capacity	1× SC/APC, 2×SC/APC, 2× LC/APC,4× LC/APC
Insertion Loss	≤ 0.3 dB
Return Loss for APC	≥ 60 dB
Return Loss for UPC	≥ 50 dB
Fiber Type	G.657A1
Fiber Optic Cable	
Cable Insertion Loss at 1,310nm	≤ 0.36 dB
Cable Insertion Loss at 1,550nm	≤ 0.22 dB
Cable Diameter	3.0 ± 0.1 mm
Material	LSZH
Color	White
Weight	8 kg/km
Short-term / Long-term Tension	220 N / 70 N
Short-term / Long-term Crush Resistance	100 N / 500 N
Short-term / Long-term Min. Bending Radius	20 D / 10 D
Installation / Working /Storage Temperature	-5 to +60 °C / -20 to +70 °C / -20 to +70 °C
Flame Resistance	CPR Dca